

# we are sturdy



Sturdy Memorial Hospital  
2021 Annual Report



**AIMEE B. BREWER, MPH**  
President & CEO  
Sturdy Memorial Hospital

PRESIDENT'S MESSAGE

As Sturdy's new President and CEO, I welcome you to our 2021 Annual Report. In this report, you will find highlights of new initiatives, new physicians, our continued response to the global pandemic, and celebration of those who have given generously to Sturdy allowing us to continue providing healthcare solutions to all the communities we serve.

Since joining Sturdy in October, I have spent much of my first three months rounding, touring and meeting with hundreds of employees, physicians, leaders, board members and community partners. From this robust introduction, I have observed and am keenly aware of the countless strengths Sturdy has.

I am highly impressed with the expertise, professionalism and dedication of our physicians, nurses and the entire staff that make Sturdy the incredible health system that it is.

Every healthcare organization continues to face monumental challenges that have been accelerated by the ongoing pandemic. At Sturdy, PPE and supply costs have continued to increase while unprecedented workforce shortages—increasing the cost of travelers (temporary medical staff), the availability of temporary staff, not to mention the exhaustion and burnout that comes as a result—has impacted us directly. Combined with capacity issues, cancellation of surgeries, the impacts of delayed care and the ever increasing

behavioral health crisis we're experiencing with patients in our emergency rooms leads to an extremely challenging environment to be in most days.

However, in spite of these challenges, Sturdy's commitment to our patients and community was stronger than ever this past year as we were the leaders in COVID education, vaccine distribution, testing and taking care of all who needed our services.

Looking forward, in 2022, our focus will be on staff wellness, retention and morale—we will strengthen our workforce culture by investing in our teams so we can continue to respond to the ever-changing needs of our community. We will also complete a comprehensive strategic plan, make further IT investments, and prioritize telling our story internally and externally.

Sturdy has so much to be proud of and it is with sincere enthusiasm that I invite you to join us in the storytelling throughout the upcoming year and beyond.



**JOHN R. KORONA**  
Chair of the Board  
Sturdy Memorial Hospital

Chair of the Board Message

I am humbled by the endurance and resiliency of the staff at the Hospital and Associate Practices who have adapted to new safety protocols while taking care of the sick and injured, all while learning to optimize Cerner, Sturdy's new electronic medical record system. Staff across the Sturdy system approach each day with perseverance and determination while conquering the unique challenges of delivering the best possible healthcare during a deadly pandemic.

Sturdy's Cancer program never missed a beat, administering preeminent oncology care with precision and kindness while focused on the safety of each patient. The staff at Sturdy advocated to open access for appointments to perform screening procedures like colonoscopies, mammograms and early lung cancer, knowing that early detection is essential for the best possible outcomes. Sturdy's Emergency Department has experienced an increase in overall volume while treating and spending great resources to board and find beds at appropriate facilities for more and more behavioral health patients since the closure of Norwood Hospital.

Leading the way on COVID-19, Sturdy has played an essential role in communicating vital information on the efficacy and safety of the vaccines to the public and employees. Demonstrating leadership, Sturdy mandated that all employees be vaccinated to ensure the safety of our patients. Sturdy has been a frontrunner in COVID-19 testing from the beginning and continues offering numerous opportunities for the public to be tested and vaccinated.

Sturdy's Board of Managers hired Aimee Brewer as President and Chief Executive Officer, who joined Sturdy in early October following the retirement of Joe Casey. Aimee joins Sturdy from NorthBay Healthcare in Northern California, a similar independent community health system to Sturdy. Aimee was born, raised and educated in New England and is thrilled to be back on the east coast. I am confident that Aimee will be an inspirational and strategic leader as Sturdy continues to provide excellent healthcare to our communities.

*I have had the honor to sit on the board for Sturdy Memorial Hospital for the past decade, the last two years as chair, and I am filled with great optimism about the future of this outstanding organization. As the COVID-19 pandemic seems to be ever-present in our lives, Sturdy continues to overcome and achieve remarkable things for our community, every single day!*

A lot has been accomplished in the past year, even with the challenges the pandemic has created. The opening of the new Medical Office Building at 100 O'Neil Boulevard last March brought together Primary Care, Orthopedics, Surgery and Physical Therapy, as well as, moving the outpatient laboratory from the Hospital, for a vastly improved patient experience. Sturdy also invested over \$2.9 million for a new state-of-the-art Linear Accelerator and renovations at the Brigham and Women's/Sturdy Memorial Radiation Oncology Center in Mansfield to safeguard access to specialized care within our community.

Construction projects to improve the infrastructure and modernize the Hospital are ongoing with an Operating Room expansion and the relocation of the Central Sterilization Room, expanding the surgical capacity at the Hospital while making it more efficient. The future holds more change and growth for Sturdy, and I am excited to be part of this evolution.

I know you will join me in my sincere appreciation of the entire staff at Sturdy and recognize the sacrifices they make every day to ensure that Sturdy thrives in this unconventional environment. A hospital is just a building, the people in it, are what make it special... and at Sturdy I see that every single day!

In closing I want to thank Joe Casey for his 32 years of service to the hospital. After serving as Controller for six years and Chief Financial Officer for 22 years, Joe stepped into the CEO role four years ago. He postponed his retirement for a year to provide steady leadership through COVID, and the conversion to a new electronic medical record system. All while we conducted a search for his successor, Aimee Brewer. Please join me in congratulating Joe on his retirement, and welcoming Aimee to the Sturdy community.

Thank You!

**CONTENTS** →

2	President & Chair Message	8	Empowering the Patient	14	Sturdy Legacy Society
4	Leadership & Management	9	Sturdy Focus: Variant Response	15	2021 Fiscal Year Community Benefits
5	2021 Fiscal Year Statistics	10	Future Outlook: Continued Growth	16	Message to Our Staff
6	Transitions in Leadership	12	2021 Grants and Community Support	18	The Sturdy Society
7	Physicians Hired in 2021	14	Employee Reoccurring Gift Listing	19	Accreditations/Awards/Memberships

# Leadership & Management

## STURDY MEMORIAL FOUNDATION, INC. BOARD OF DIRECTORS

### OFFICERS

Ralph Schlenker  
*President*

John R. Korona  
*Vice President & Chair of the Board*

Stephen Burlone  
*Treasurer*

Colleen McGahan, Esq.  
*Clerk*

### BOARD MEMBERS

Aimee B. Brewer, MPH<sup>1</sup>  
Stephen Burlone  
Joseph Casey<sup>5</sup>  
Patricia Cochrane  
Mark Cooper  
Dwayne DeMond  
Richard DiGiacomo  
Ted Dion  
Roger Forman  
Laura Gignac  
Mayor Paul Heroux  
Brian Kelly, MD<sup>5</sup>  
E. Dennis Kelly  
John R. Korona  
Colleen McGahan, Esq.  
Thomas Noel, Esq.  
Brian Patel, MD<sup>1</sup>  
Ralph P. Schlenker  
Jean Siddall-Bensson, MD  
Robert Thresher  
Michael Thursby, DO  
Ronald Van Ness-Otunnu, MD

## STURDY MEMORIAL ASSOCIATES, INC. MANAGEMENT

Joseph Casey<sup>5</sup>  
*President & Chief Executive Officer*

Aimee B. Brewer, MPH<sup>1</sup>  
*President & Chief Executive Officer*

Carolyn Ross  
*Vice President for Human Resources*

Amy Pfeffer  
*Treasurer & Chief Financial Officer*

Steven Frank, DO  
*Medical Director*

William Florentino  
*Chief Marketing & Development Officer*

Blair Bisher  
*Chief Operating Officer*

Felicia Fontaine  
*Director of Operations*

## STURDY MEMORIAL ASSOCIATES, INC. BOARD OF DIRECTORS

### OFFICERS

Michael Thursby, MD<sup>3</sup>  
*President*

Richard Smith, MD<sup>7</sup>  
*President*

Amy Pfeffer  
*Treasurer*

Aimee B. Brewer, MPH<sup>1</sup>  
*Executive Director & Clerk*

Joseph Casey<sup>5</sup>  
*Executive Director & Clerk*

### BOARD MEMBERS

Steven Bensson, MD  
Joseph Casey  
Brian Kelly, MD  
John R. Korona  
Sharon Mullane, MD<sup>6</sup>  
Ralph P. Schlenker  
Umar Shakur, DO<sup>2</sup>  
Richard Smith, MD<sup>7</sup>

## STURDY MEMORIAL HOSPITAL SENIOR MANAGEMENT

Joseph Casey<sup>5</sup>  
*President & Chief Executive Officer*

Aimee B. Brewer, MPH<sup>1</sup>  
*President & Chief Executive Officer*

Brian Kelly, MD<sup>4</sup>  
*Senior Vice President for Medical Affairs, Medical Director, & Chief Quality Officer*

Brian Patel, MD<sup>1</sup>  
*Senior Vice President for Medical Affairs, Medical Director, & Chief Quality Officer*

Carolyn Ross  
*Vice President for Human Resources*

Amy Pfeffer  
*Treasurer & Chief Financial Officer*

William Florentino  
*Chief Marketing & Development Officer*

Brian Patel, MD<sup>5</sup>  
*Chief of Emergency Services & Associate Chief Quality Officer*

Robin Morris  
*Senior Vice President of Clinical Operations & Corporate Integrity Officer*

David Spoor, RN  
*Senior Vice President for Patient Care Services & Chief Nursing Officer*

Blair Bisher  
*Chief Operating Officer for Sturdy Memorial Associates*

## STURDY MEMORIAL HOSPITAL BOARD OF MANAGERS

### OFFICERS

John R. Korona  
*Chair of the Board*

Amy Pfeffer  
*Treasurer*

Colleen McGahan, Esq.  
*Clerk*

### BOARD MEMBERS

Aimee B. Brewer, MPH<sup>1</sup>  
Stephen Burlone  
Joseph Casey<sup>5</sup>  
Patricia Cochrane  
Mark Cooper  
Dwayne DeMond  
Richard DiGiacomo  
Ted Dion  
Roger Forman  
Laura Gignac  
Mayor Paul Heroux  
Brian Kelly, MD<sup>5</sup>  
Dennis Kelly  
John R. Korona  
Colleen McGahan, Esq.  
Thomas Noel, Esq.  
Brian Patel, MD<sup>1</sup>  
Ralph P. Schlenker  
Jean Siddall-Bensson, MD  
Robert Thresher  
Michael Thursby, DO  
Ronald Van Ness-Otunnu, MD

## STURDY MEMORIAL HOSPITAL MEDICAL STAFF (2021)

### EXECUTIVE COMMITTEE

Ronald Van Ness-Otunnu, MD  
*Associate Chief, Ambulatory Care President & Chair*

Nithin Karanth, MD  
*Vice President*

Richard Smith, MD  
*Chief of Pathology Immediate Past President*

Sharon Mullane, MD  
*Secretary/Treasurer*

Brian Kelly, MD  
*Medical Director*

Brian Patel, MD  
*Ambulatory Care*

Amer Tabbal, MD  
*Anesthesiology*

Natalia Naritsin, MD  
*Hospitalist Group*

Gregory Soares, MD  
*Imaging*

Mark Umphrey, DO  
*Family Practice*

Jean Siddall-Bensson, MD  
*Internal Medicine*

Lawrence Greb, MD  
*Obstetrics/Gynecology*

James Snead, MD  
*Orthopedics*

Carl Szczesniak, MD  
*Pathology*

Owen Debowy, MD  
*Pediatrics*

Thomas Roodhouse, MD  
*Surgery*

Stephanie Muriglan, MD  
*At-Large Member*

Elizabeth Gebhard, DO  
*At-Large Member*

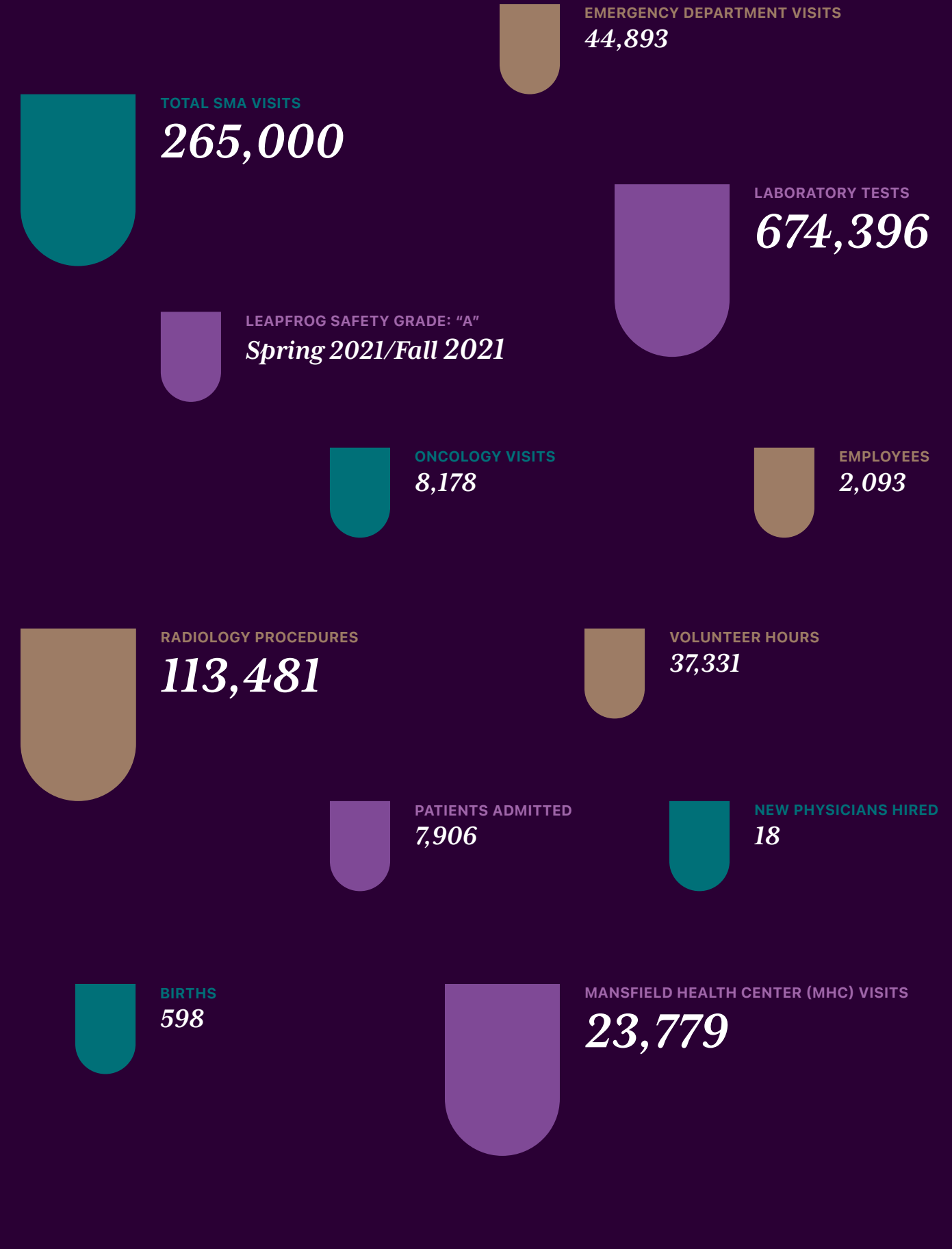
Tanvi Khurana, MD  
*At-Large Member*

Joseph Casey  
*Chief Executive Officer (Ex Officio)*

David Spoor, RN  
*Chief Nursing Officer*

Glenn Tucker, MD  
*Chief Medical Informatics Officer*

# FY 2021 Statistics



<sup>1</sup> As of October 1, 2021

<sup>2</sup> As of July 2021

<sup>3</sup> As of February 2021

<sup>4</sup> As of September 30, 2021

<sup>5</sup> Until September 30, 2021

<sup>6</sup> Until May 2021

<sup>7</sup> Until January 2021



# Transitions in Leadership



**JOSEPH F.X. CASEY** retired at the end of September capping a 32 year career with Sturdy Memorial Hospital. Joe joined Sturdy in 1989 as Controller and was promoted in 1996 to Chief Financial Officer. He was instrumental in securing Sturdy's financial stability over the past three decades. During his tenure as CFO, the hospital outperformed budget every year. Joe negotiated favorable contracts with third-party payers, many which are still in place today. He focused on paying down all the outstanding debt and funded multiple facility renovations and expansions with operating income. Joe also successfully managed one of the few remaining defined benefit pension plans, which provides retirement benefits for all vested employees. In 2018, Joe accepted the role of President and CEO and during his short time in that position, he lead the hospital and Associate practices through two information system conversions, as well as, the significant impacts during the onset of the COVID-19 pandemic. Joe had great confidence in the leadership team at Sturdy and always expressed his gratefulness to the staff, physicians and community for their unwavering dedication to the Sturdy organization.

**AIMEE B. BREWER, MPH** joined Sturdy as President and CEO of Sturdy Memorial Hospital in October of 2021. Sturdy's Board was most impressed with Aimee's collaborative and community spirit, qualities that make Sturdy a natural fit for her. Aimee came to Sturdy from NorthBay Healthcare Group in Fairfield, California where she served as President. Born and raised in New England, she is thrilled to be back on the east coast and joining Sturdy's thriving

community. With a keen focus on culture and understanding the importance of ensuring a supportive leadership structure, combined with her exceptional leadership qualities, the Sturdy community has embraced Aimee in her CEO role at Sturdy.

**BRIAN KELLY, MD** retired from his position of Vice President for Medical Affairs, Medical Director & Chief Quality Officer on October 31, 2021 after an illustrious career dedicating 27 years of service. Dr. Kelly is a graduate of Rush Medical School of Rush University in Chicago, Illinois and completed his residency at Brooke Army Medical Center in San Antonio, Texas. Dr. Kelly joined Sturdy in 1994 as a leader in the Emergency Department. He became member of the Sturdy Senior Management team in 2012 and was promoted to Vice President of Medical Affairs in 2015.

**BRIAN PATEL, MD, FACEP** joined the Department of Emergency Medicine in August of 2005 after completing medical school at the University of Massachusetts Medical School and his Emergency Medicine residency at Brown University and Rhode Island Hospital. In 2012 he was appointed Associate Chief of Emergency Services and then Chief of Emergency Services in 2015. In 2017, he took on the role of Associate Chief Quality Officer and joined the Senior Management Team. Finally, in October of 2021 when Dr. Brian Kelly retired, Dr. Patel was promoted into the role of Vice President of Medical Affairs, Chief Medical Officer and Chief Quality Officer. Throughout his career at Sturdy, Dr. Patel has worked to advance the care that we provide our patients and our community. Dr. Patel has worked to address the opioid epidemic

through creation of a joint venture with Column Health as well as implementation of a buprenorphine bridge program in the ED. He has championed standardized protocols for stroke and STEMI care that has led to multiple awards from the AHA and ASA. Additionally, he served as the Geriatric ED Medical Director and led the ED to accreditation by ACEP as a Geriatric ED. He serves on the Column Health Sturdy board as well as the Sturdy/Brigham Radiation Oncology Board ensuring the success of these services for our community. He has been an active member with the Massachusetts Hospital Association working with them to implement various clinical initiatives and serving as a voice for the community hospital at the state level. Dr. Patel was a key leader in the organization's response to the COVID-19 pandemic. His steadfast commitment to patient, staff and visitor safety has strengthened the Sturdy organization during the pandemic.

**DR. RON VAN NESS-OTUNNU** joined the Department of Emergency Medicine in July of 2012 and was named Associate Chief in October of 2016. He has promoted the latest, evidence-based care by providing education for Emergency Department staff through a clinical lecture series for advanced practice providers, case-based lectures for nurses in training, a surgical airway workshop for providers, and composed a periodic newsletter on emergency management topics. He has been active in stroke review and reporting on quality measures, formulating policies and guidelines for the ED, including implementation of the HEART score for cardiac risk stratification and pathways for opiate-sparing pain management, and

crafting hospital-wide initiatives, including the high sensitivity troponin algorithm and hyperglycemic crisis guidelines. Since 2017 he has served as the Pediatric Emergency Care Coordinator, disseminating the latest guidelines for pediatric emergency treatment. From 2018 to 2019 he served as Vice President of the Medical Staff and from 2020-2021 as Medical Staff President. Over the past 9 years he has contributed to the ED Leadership, Medical Executive, Patient Care and Assessment, Critical Care, Stroke Care Advisory, Emergency Management, Quality Oversight, Transfusion, Medical Education, and Credentials committees. This year, as Geriatric Emergency Department Director, he leads the ED team in improving care for geriatric patients. In October, 2021 he was appointed Chief of Emergency Medicine and is the current Region V EMS Medical Director.

**KAREN MESSIER** retired in the summer of 2021 after 41 years of service to Sturdy Memorial Hospital. Karen's legacy at Sturdy is cemented by her extraordinary leadership in creating the Sturdy Oncology Program. Her unwavering dedication to the safety of Sturdy's Oncology patients and the Sturdy community, will forever be engrained in Sturdy's history. Filling Karen's shoes would be no easy task but fortunately for Sturdy, **KATHY MARTIN** who had been mentored by Karen for over 25 years in the Oncology Department accepted the monumental role as Director of Oncology.

**JEFFREY HELD, MD** join Sturdy in October of 2021 at Chief Medical Information Officer and is an Internal Medicine physician practicing out of Sturdy Memorial Associates at Plainville. Dr. Held is an innovative, results-driven physician executive and physician informaticist with over 14 years of progressive health care leadership experience spanning primary care, hospital care, hospital administration, ambulatory administration, post-acute partnerships, and telehealth program development. Dr. Held has proven expertise in change management and physician culture transformation, aligning physicians to organizational goals by focusing on outcome-driven process improvement metrics. An experienced physician executive with regard to addressing hospital medical staff issues and health system governance.

# Physicians Hired in 2021

	<b>LAURA AMORESE-O'CONNELL, MD</b> Rheumatologist Mansfield Health Center		<b>JEFFREY HELD, MD</b> Chief Medical Information Officer & Internal Medicine Physician
	<b>SAHIL BATTA, MD</b> Hospitalist		<b>DAWNA JONES, MD</b> Laborist
	<b>ANNALISE BOISVERT, MD</b> Laborist		<b>MARK LUCEY JR, MD</b> Internal Medicine physician Attleboro Medical Associates
	<b>AKANSHA CHOWDHARY, MD</b> Hematology and Oncology Associates		<b>CATHERINE LAPENTA, MD</b> Hospitalist
	<b>DOUGLAS J. DICOLA, MD</b> Orthopedic & Primary Care Physician / Sturdy Orthopedic and Sports Medicine Associates at 100 O'Neil Blvd		<b>PAUL SERGI, MD</b> Per Diem Surgeon in Wound Care
	<b>PAUL FU, MD</b> Neurologist & Chief Medical Officer Sturdy Memorial Associates		<b>PETER SODEN, MD</b> Brown Surgical Associates- Vascular Physician
	<b>DOUGLAS GLOD, MD</b> Wound Care with a Podiatry specialty		<b>CARL SZCZESNIAK, MD</b> Chief Pathologist
	<b>NANCY HAMEL, MD</b> Family Medicine Physician Sturdy Memorial Associates of Plainville		<b>ZEYAR MYINT YEH, MD</b> Hospitalist
	<b>MICHAEL P. HARRINGTON, DPM</b> Podiatrist Podiatry Associates of Plainville		



# Empowering the Patient

Optimizing Sturdy's new Electronic Medical Record system, Cerner, was a top priority in 2021. The enormity of the conversion cannot be understated and required numerous resources that have been invested in staff training and side-by-side support of our medical staff. As Sturdy physicians and medical professionals continue to master and optimize the functionality of Cerner, they are continually improving the patient experience through strengthened engagement, care coordination, support, empowerment and access that promotes patient-centered care.



The MySturdyHealth Patient Portal connects patients with their medical record in Sturdy's Electronic Health Record, Cerner, allowing greater flexibility and control of their health records. The patient portal empowers patients of Sturdy to access important medical information anytime they want it. MySturdyHealth patients can:

- Communicate with their care team through a secure online messaging system
- Request an appointment
- View a list of active medications
- Access information about the medications
- Request medication refills from their provider
- View all notes and test results immediately

Patients are able to establish an account during any routine visit at Sturdy Memorial Hospital or one of Sturdy Memorial Associates medical offices. After the initial set-up, patients can access MySturdyHealth right from any web browser on a computer or they can download HealthLife in the App store on an iOS device or the Google Play Store on an android device. Patients can simply search for HealthLife by Cerner and download it for free.



Sturdy also engaged PocketHealth, which allows patients to view and share their medical imaging records from anywhere in the world, instead of them having to pick up a CD at the Hospital. PocketHealth receives patient records from Sturdy digitally, organizes them in a secure account, and stores them forever allowing patients greater access to their imaging records while encouraging them to become active and engaged participants in their own care. Sturdy has made this patient empowerment service free to its patients.



# Sturdy Focus: Variant Response

The COVID-19 pandemic continued to play a major role in affecting healthcare delivery over the past year. Earlier in the year, after what had seemed to be a turning point in the pandemic with relaxation of many of the restrictions put into place earlier in the pandemic, the country was overcome yet again with another variant of SARS\_COV-2, the Delta variant. Hospitals across the country had to re-instate many of their infection control and surge planning strategies to approach the Delta variant which was determined to be highly contagious, with the CDC labeling it twice as contagious as previous variants. CDC data also suggested that the Delta variant caused more severe illness than previous variants in unvaccinated people. In two different studies from Canada and Scotland, patients infected with the Delta variant were more likely to be hospitalized than patients infected with the original COVID-19 virus. The one thing everyone agreed on is that the vast majority of hospitalization and death caused by COVID-19 were in unvaccinated people.

In preparing for a surge of patients, Sturdy expanded its ability to provide patient care by transforming its Outpatient Physical Therapy (PT) department into a 12 bed surge unit. Moving PT to an off-site location allowed for the medical staff and nurses to treat patients displaced by the influx of COVID-19 patients. 2021 was another defining year with the Sturdy clinical care team treating 451 Covid Patients.

Vaccination remains the key to reducing the spread of COVID-19 and the number of Americans we lose to this disease. Local, state and federal statistics as well as numerous studies continue to prove the efficacy of vaccination in reducing risk of developing severe COVID-19, hospitalization and death. As a leader in the delivery of healthcare Sturdy was and remains active in offering and administering the vaccine to its employees and the public in general. Sturdy Memorial Associates held over 30 public clinics administering 9,416 shots to 4,952 individuals.



Members of the ICU team

Strong advocacy for the vaccines continues to this day knowing that unvaccinated people still remain the greatest concern. The greatest risk of transmission is among unvaccinated people, who are much more likely to become infected, and therefore transmit the virus to others. Even though fully vaccinated people can still be infected with COVID-19, known as breakthrough infections, they are less likely than unvaccinated people.

Sturdy is the local leader in Covid-19 testing, vaccine administration and advocacy. Our commitment to fighting COVID-19 will not wane until the pandemic is declared over!

Walkabout COVID and Flu Vaccine Clinic



Walkabout COVID-19 Information Booth



# Future Outlook: Continued Growth



Linear Accelerator

## LINEAR ACCELERATOR

The care team at the Brigham and Women's/Sturdy Memorial Radiation Oncology Center in Mansfield is comprised of board certified radiation oncologists, highly skilled radiation therapists and physicists, along with compassionate nurses who are trained to utilize the most advanced treatment technologies to provide expert, individualized cancer care. Sturdy invested over \$2.9 million for a new state-of-the-art Linear Accelerator and renovations at the center to safeguard access to specialized cancer care within our community. A medical linear accelerator or LINAC customizes high energy x-rays or electrons to conform to the shape of a tumor to destroy cancer cells while not damaging the surrounding healthy tissue. The high-tech device features several built-in safety measures to ensure that it delivers the prescribed dose and is routinely checked by a medical physicist who ensures that it is working properly.

## SURGICAL DAY CARE AND OPERATION ROOM EXPANSION

Orthopedic surgical cases performed at Sturdy have steadily increased over the past several years highlighting the need for an additional surgical suite, even more efficient workflows and a redesign of how we process surgical equipment. In 2021 Sturdy performed 5,617 surgical cases in the Operation Rooms and 4,380 Endoscopy cases, overall a 27.2 percent increase. With the addition of increased Urogynecological, spine procedure, and podiatry cases to the existing eye and orthopedic surgical cases, the increased volume reinforced the need for Sturdy to strategize expansion and efficiencies.

Moving critical functions out of the Operating Room area will allow for a more efficient processing of surgical equipment and permit for timely preparation of the operating rooms and accommodating additional volume.

A strategic change of the location of the Operating Room Cleaning and Sterilization division to the newly designed Central Sterilization Room (CSR) has centralized the cleaning and sterilization of surgical equipment using state-of-the-art equipment for pre-cleaning orthopedic surgical equipment, affectively helping us to prevent hospital acquired infections. The project began in 2020 which largely entailed the replacement of flooring and instillation of new ceilings in the Operating Rooms. In 2021 the redesign of the CSR physical space began with a completion target of Spring 2022.

The overall goal of increased efficiency around the sterilization of the equipment used in the operating rooms, endoscopy suites and maternity C-section operating rooms will be realized with the consolidation and streamlining of our patient safety sterilization process.

Central Sterilization Room (CSR)



## OPENING OF 100 O'NEIL BOULEVARD

The opening of Sturdy Memorial Associates at 100 O'Neil Boulevard in March brought together eight Primary Care and additional advanced practitioners from Attleboro Medical Associates (AMA), Sturdy Orthopedics and Sports Medicine (SOSMA), Attleboro Surgical Group (SGA) and SOSMA Physical Therapy. Also, the new Medical Office Building now houses the Sturdy outpatient laboratory which was moved from the Hospital, for a vastly improved patient experience in a convenient location approximate to the Hospital with easy parking.





# 2021 Grants and Community Support



**FRED M. RODDY FOUNDATION GRANT**  
 Sturdy received a grant of \$47,609 from the Fred M. Roddy Foundation to purchase next generation ultrasonic cleaning and sterilization equipment for the Central Sterilization Room. The foundation has a legacy of supporting the purchase of capital equipment and projects to ensure patient safety at the Hospital.

(pictured left to right)  
 Joseph FX Casey, retired President and Chief Executive Officer of Sturdy Memorial Hospital;  
 Elizabeth McIntyre, President, Fred M. Roddy Foundation

## THE PATIENT NEEDS FUND

The Patient Needs Fund was established in 2019 by grants from the North Attleboro Industrial Park Businesses and Starkweather & Shepley and is continually supported by friends of Sturdy Memorial Hospital. The purpose of the fund is to support initiatives at the Hospital that directly impact our patients and improve their patient experience. In 2021 the Patient Needs Fund supported over \$6,700 for the benefit of Sturdy's patients. Because of the Fund, Sturdy staff were able to provide patients with clean clothing, audio amplifiers and headphones, diabetes educational materials, wound care packages, newborn car seats, Oncology water bottles and other personal care items.



WHY WE GIVE

(pictured from left to right)  
 Audrey Nappen, Marilyn Nappen, Donna Nappen Kimmel

"We support Sturdy Memorial because having a dependable community hospital to take care of our family locally is indispensable."

## 4TH ANNUAL WALKABOUT

The 4th Annual Walkabout, sponsored by Bristol County Savings Bank, was held on October 2, 2021 and the weather cooperated driving 850+ community members to attend the event at Capron Park Zoo. Sturdy Memorial Associates offered both Flu and COVID-19 vaccinations, South Attleboro Lions offered diabetic eye screenings in their eye mobile, along with 32 other educational booths on health, wellness and safety topics including; Blood Pressure and Coping with Stress, Cancer Care, Cancer Survivors, Car Seat Safety, COVID-19 Vaccine Safety,

CVNA Homecare, Daisy Nursing Award, D.A.R.E., Diabetes Prevention, Disability Awareness, Elder Abuse Prevention, Elder Dental Care, Exercise Wellness, Family Wellness, Fire Safety, Financial Literacy, Imaging Pocket Health, Infant CPR, Infant Massage, Infant Safe Sleep, Internet Security Awareness, Lactation Support, NICHE, Rehabilitation Services, Rethink Your Drink Sugar Intake Re-education, Safe Surgery, Smoking Cessation, Sports Injuries and Concussions, Stroke Awareness, Sun Safety, Wellness Heart Health and Wound Care.



To Benefit Sturdy Memorial Hospital and The Rotary Club of Attleboro



## 25TH ANNUAL RALPH P. SCHLENKER GOLF TOURNAMENT

The 25th Annual Ralph P. Schlenker Golf Tournament was rained out for the first time in the history of the tournament. The committee decided to postpone the event until July 11, 2022 allowing Sturdy to properly celebrate the momentous milestone. In planning for the 25th Celebration, A.I.M. Mutual Insurance Companies donated a \$9,000 grant to purchase a golf cart vehicle for the Security Department at Sturdy. Ralph P. Schlenker sits on the Board of A.I.M. Mutual Insurance Companies and their President and CEO Mike Standing wanted to commemorate the golf tournaments success while honoring Ralph. Unfortunately, Mr. Standing passed away in October of 2021 from an extended illness but his legacy lives on in their philanthropic support of Sturdy.



(pictured left to right)  
 Paul Kehoe, Dan Landers, Ralph Schlenker, Aimee Brewer, MHP and John Meyer



Sturdy Memorial Foundation earned a 2021 Silver Seal of Transparency





## 2021 Employee Payroll Deduction Donors

The management of Sturdy Memorial Hospital recognizes the generosity of its dedicated staff members that contributes through weekly payroll deductions in support of the Hospital. These contributions totaled more than \$5,809 in 2021.

This collective philanthropic support helps to fund efforts supporting Sturdy's four core values;

*Quality of Care • Patient Satisfaction • Patient Safety • Cost and Efficiencies*

**RICHARD A. ADETOLA**  
CHRISTINA L. ALVES  
MATTHEW J. BALASCO  
MARK R. BEDARD  
JENNIFER L. BOTELHO  
CARA A. BURDETTE  
CYNTHIA CAOQUETTE  
JOSHUA J. CARRIER  
SANDRA J. CARRIER

**ANGELA M. CARTER-GREENOUGH**  
CATHERINE CURBOW  
MAGNELY FRANJUL  
CATHLEEN JANDRON  
SUSAN JOHNSON  
LINDA KATIBIAN  
MICHAEL M. LINK  
KELLY E. LOCKWOOD  
TAMMY L. MACLEOD

**JAMES J. MARTIN**  
DOUGLAS MELGAR  
EVA M. MORRISON  
KARLA P. NARDELLI  
MARTIN NUGENT  
EDMOND NUNES  
ASTRID R. O'DRISCOLL  
JEREMY A. PAQUETTE  
VENESSA PETIT

**MELISSA A. REILLY**  
DEBORAH A. SILVA  
MONIQUE J. SPEICHT  
DAVID SPOOR  
SUSAN L. THERIEN  
JOANNA YOUNG

For more information regarding contributions through payroll deduction, please contact the Human Resource Department.

## The Sturdy Legacy Society

The Sturdy Memorial Foundation Legacy Society honors members of its community who have provided for Sturdy Memorial Hospital in their estate plans. For decades Sturdy Memorial Hospital has been the recipient of the generosity of special friends who have furthered Sturdy's mission of helping to deliver the best care possible to its patients.

Planned gifts for programmatic support, capital improvements, breakthrough technology and funds to assist the needy have allowed for Sturdy to improve its facilities and directly help patients of Sturdy.

### 2021 STURDY LEGACY SOCIETY MEMBERS

- William J. Florentino and Timothy A. Allard
- John E. O'Hara
- Alice Polley
- Paul Turner

### ESTATE GIFTS AND BEQUESTS RECEIVED IN 2021

- Milford E. Bliss\*
- Dr. John and Marie H. Chiarenza\*
- Daniel F. Devine\*
- Phillip R. and Muriel R. Jones\*

\*Deceased

For more information about the Sturdy Legacy Society, please call the Development Office at **(508) 236-8008**

## Sturdy Memorial Foundation Named Fund Recognition Program

Sturdy Memorial Foundation's Named Fund Recognition Program was established to honor philanthropic giving to Sturdy Memorial Foundation in support of Sturdy Memorial Hospital.

All giving to established Named Funds is added to the investment pool of the Foundation and shall exist in perpetuity. On an annual basis the realized annual investment income derived from the principal will be split with 50 percent being reinvested into the fund to grow the principal and 50 percent going to fund active initiatives at Sturdy Memorial Hospital designated by the donor.

### ALBERT R. AND RITA J. ALLARD FUND FOR EDUCATION AND TECHNOLOGY

Established in 2017

### THE PROFESSIONAL CARE GIVER EDUCATION FUND IN HONOR OF THE CONTRIBUTIONS OF MARITA PRATER CNO TO STURDY MEMORIAL HOSPITAL

Established in 2017

### PHYSICIANS OF STURDY HOSPITAL FUND TO SUPPORT THE CONTINUED MEDICAL EDUCATION AND OTHER NEEDS OF STURDY'S MEDICAL STAFF

Established in 2017

For more information on setting up a Named Fund please contact William J. Florentino at **(508) 236-8015** or [wflorentino@sturdymemorial.org](mailto:wflorentino@sturdymemorial.org)

### SERVING COMMUNITY ORGANIZATIONS

Membership in, collaboration with, and appointments to the Boards of community organizations allows Hospital staff to share their expertise. Sturdy proudly contributes to more than 30 area Boards, medical associations, and service organizations in our communities.

### FY 2021 COMMUNITY BENEFITS

Sturdy Memorial's employees, medical staff and volunteers are involved in a wide variety of activities that benefit our neighbors. Below are some of the programs we participated in during FY 2021— (October 1, 2020 – September 30, 2021).

*Please note, the COVID-19 pandemic directly impacted some of our Community Benefit programs as we strictly followed all health and safety restrictions.*

Adult & Infant CPR  
Advanced & Basic Cardiac Life Support  
Blood Drives  
Breast Cancer Support Group  
Breastfeeding Classes & Support  
Cancer Care Coordination Services  
Cancer Information Line  
Cancer Support Group  
Childbirth Education Programs  
Diabetes Education & Support  
EMS Education/Medical Oversight  
Emergency Preparedness Awareness  
EMS North Conference  
Financial Assistance Counseling  
Lactation Consultations  
LiveStrong Program with YMCAs  
Lymphedema Support Group  
Mansfield Summer Concert  
Medical Profile Cards  
Multiple Sclerosis Support Group  
Nutrition Education & Outreach  
Ostomy Support Group  
Palliative Care Education  
Pastoral Care Program

Patriots Place Kids Day  
Perinatal Bereavement Services  
Physician Referral Line  
Poison Control & Prevention Kits  
Pregnancy & Infant Loss Support Group  
Prostate Cancer Support Group  
Region 5 Health & Medical Coordinating Coalitions  
Rehoboth Youth Soccer Opening Day  
Seekonk Summer Concert  
Sharps Disposal Program w/ Area Fire Departments  
Sponsorship of Families at the Holidays  
Stroke Support Group  
Student Intern/Extern Programs\*  
Support of Local Food Pantries  
Uncompensated Care:  
\$4.2 million for those who could not or would not pay  
Weight Management Education  
Wellness Programs  
Wheaton College Practicum  
Youth Mentoring Programs  
Youth Sports Team Sponsorships

\*We serve medical and nursing students as well as student interns from more than 50 schools and colleges.



# To our staff

While the promise of this pandemic ending has not yet been realized, we want you to know that we continually see the sacrifices you're making and the bravery you continue to display every day caring for our patients.

And though it feels like there is no end in sight to this pandemic, there's an undeniable sense we will persevere and get through it, because together — *we are sturdy.*







## 2021 STURDY SOCIETY MEMBERS

Sturdy Memorial Hospital recognizes the generosity of its staff, community members, and its philanthropic partners through the Sturdy Society. Sturdy Memorial Hospital is dedicated to its patients through clinical excellence, exceptional service, and sound financial management. The Sturdy Society contributions strengthen the already successful formula of delivering top-notch healthcare while being fiscally responsible through diligent management and financial oversight, to benefit patients and the communities it serves.

### CHAIRMAN'S CIRCLE

**\$25,000+**

Muriel R. Jones Trust in memory of  
Phillip R. Jones and Muriel R. Jones\*  
Fred M. Roddy Foundation

### PRESIDENT'S CIRCLE

**\$10,000–\$24,999**

Brewster Ambulance Service  
Coverys  
Mark Cuddy  
Equity Alliance LLC  
Curt and Mary Ellen Fauth  
Fbinsure  
Andrew Kelson  
M.S. Company, Inc.  
Novo Nordisk  
Roddy Holden Kintzel Charitable Fund  
Kurt M. Schweinschaut

### INNOVATOR

**\$5,000–\$9,999**

A.I.M. Mutual Insurance Companies  
Mr. and Mrs. Stephen J. Burlone  
Joe and Buffy Casey  
Dr. John J. and Marie H. Chiarenza\*  
JEM Pathology  
Donna N. Kimmel  
John and Sally Reardon  
F. Thomas and Patricia D. Westcott Foundation

### ADVOCATE

**\$2,500–\$4,999**

Action Collection Agency of Boston  
Arden Engineering Constructors, LLC  
Marco and Ines Arismendi  
Avelina Charitable Foundation  
Steven A. Benson and Jean M. Siddall-Benson  
Milford E. Bliss\*  
Bluestone Bank  
Boston Medical Center Healthnet Plan  
Bristol County Savings Bank  
Walter and Lynda Cekala  
Cerner Corporation  
Cintas Corporation  
Citrix Systems, Inc.  
Columbia  
The Demoulas Foundation  
EMCOR Services Northeast, Inc.  
Fit + Fresh  
Mr. and Mrs. Roger Forman  
Greater Attleboro Center for  
Dental Sleep Medicine  
HarborOne Bank

Income Research + Management, Inc.  
William and Rose Larson  
David C. Manoogian, Esq.  
Marathon  
Marsh & McLennan Agency, LLC.  
North Easton Savings Bank  
Donald A. Pierce, DDS  
Rockland Federal Credit Union  
Mr. and Mrs. Ralph P. Schlenker  
Schneider Electric  
Segal Marco Advisors  
Shields Health Care Group  
Thomas Shields  
Bob and Leslie Thresher  
Sturdy Memorial Associates of Plainville  
Tufts Health Plan  
Wasatch Advisors, Inc.  
Willow Tree Farm

### SUSTAINER

**\$1,000–\$2,499**

Anonymous  
Aimee and Craig Brewer  
Briggs Garden and Home  
Gary Briggs  
Castro, Thresher & Oliveira PC  
COVID Tech Connect  
Catherine Curbow  
Rick DiGiacomo  
Mr. and Mrs. James P. Downey  
Fidelity Investments  
William J. Florentino and Timothy Allard  
Mrs. Judith A. Forget  
Foster & Eldridge, LLP  
The Giving Fund  
Gregg and Deb Hanson  
Holman Insurance Agency  
HopeHealth Massachusetts, Inc.  
Mr. and Mrs. Robert E. Kearney  
Brian and Pamela Kelly  
Dennis and Michelle Kelly  
Mr. and Mrs. Anand M. Koka  
John and Kathy Korona  
Dan and Betty Larson  
Dr. Sylvia D. Lauro and David M. Lauro  
The Norking Company, Inc.  
Mr. and Mrs. Bharat R. Patel  
Dr. Brian and Mrs. Hasel Patel  
Dr. Raymond Petit  
Amy and Jim Pfeffer  
Dr. and Mrs. Rudolph W. Pierce  
Dr. Nancy J. Poblador  
Rhode Island Foundation  
Carolyn D. Ross

David Spoor and Jorge Pereira  
Starkweather & Shepley Insurance  
Brokerage, Inc.  
Anna and Mike Tamburro  
Walmart  
Whole Foods Market Foundation

### FRIEND

**\$500–\$999**

Chief Justin Alexander  
Anonymous  
Mr. and Mrs. Marco Arismendi  
Attleboro Falls Family Dentistry  
Attleboro YMCA  
BayCoast Bank  
Mr. and Mrs. David K. Bliss  
Richard V. Boucher  
BridgeHead Software  
Connection  
Coogan Smith, LLP  
Frank and Sandra Cook  
Virginia M. Coppola  
Ms. Ellen K. Cynar and Dr. Samuel K. Evans  
Dedham Savings  
Dr. and Mrs. Daniel DeYoung  
Ted Dion  
Kevin J. Dumas  
Engineered Materials Solutions, Inc.  
Susan M. Fortin  
Steve Frank, D.O., FP  
Kathi and Ray Hague  
Robert H. Hanson  
Mr. and Mrs. Edward J. Hyde  
Jackrabbit, Inc.  
Law Office of Daniel T. Blake and  
Carolyn B. Dibbert  
Dr. and Mrs. John A. Lepper  
Lewis & Sullivan, P.C.  
Marathon Company  
Colleen McGahan, Esq.  
Douglas G. Melgar  
Dr. Richard M. Mello  
Robin B. Morris  
Patrick Murray, Jr.  
Karen R. Peck  
Rockland Trust Company -  
Investment Management Group  
South Attleboro Lions Club Foundation, Inc.  
Laurie Anderson and Tom Sprague  
Michael Stepka  
Stepka Security and Communications  
Doreen S. Suprenard  
Mr. and Mrs. Steven Toupin

\*Deceased

# FY 2021 Accreditations / Awards / Corporate Membership

## ACCREDITATIONS & LICENSURE

Sturdy Memorial Hospital is licensed by the State of Massachusetts to provide acute care hospital services. Sturdy Memorial Hospital is proud to be accredited by the following:

American Academy of Sleep Medicine – Five Year Accreditation of the Sleep Lab  
American Association of Blood Banks  
American College of Radiology  
American College of Surgeons, Commission on Cancer Three Year  
Program Accreditation (accreditation maintained since 1988)  
American Diabetes Association – Education Recognition Certificate  
Centers for Medicare & Medicaid Services – Clinical Laboratory  
Improvement Amendments (CLIA)  
College of American Pathologists (CAP) – Accreditation of Laboratory Services  
DNV-GL Healthcare, USA, Inc.  
ISO 9001:2015 Recertification  
Intersocietal Commission for the Accreditation of Vascular Laboratories  
Level 3 Geriatric Emergency Department Accreditation  
Massachusetts Department of Public Health  
Massachusetts Department of Public Health for Radioactive Materials  
Primary Stroke Service – Department of Public Health

## AWARDS, CERTIFICATIONS & RECOGNITIONS

Get With The Guidelines® – Stroke Gold Plus with:  
Target Stroke Honor Roll and Target Type 2 Diabetes Honor Roll  
Harvard Pilgrim Health Care Honor Roll – Sturdy Affiliated Physicians  
Leapfrog Safety Score: A  
Nurses Improving Care of Hospitalized Elders (NICHE) Certified  
Silver Designation from New England Donor Services  
Mission: Lifeline® STEMI Referring Center Bronze Plus

## CORPORATE MEMBER

Association of the Advancement of Wound Care (AAWC)  
American Association of Cardiovascular & Pulmonary Rehab (AACVPR)  
American Hospital Association  
Daisy Foundation  
Massachusetts Association of Cardiovascular & Pulmonary Rehab (MACVPR)  
Massachusetts Coalition for the Prevention of Medical Errors  
Massachusetts Council of Community Hospitals  
Massachusetts Department of Public Health – Southeastern Massachusetts (Region 5)  
Emergency Preparedness Consortium  
Massachusetts Hospital Association  
U.S. Department of Health and Human Services, FDA Certified Mammography Facility







Amazing medicine.  
Surprisingly close.



[STURDYMEMORIAL.ORG](http://STURDYMEMORIAL.ORG)